

P&O NEDLLOYD NELSON

IMO No: 9236212 CONTAINER 2002 / 18334 GT

COMPANY:

Leonhardt & Blumberg GmbH,
Germany

YARD INFORMATION:

Guangzhou Wenchong Shipyard Co
Ltd (China) 289

DEMOLITION:



Lyttelton (N.Z.) 5/7/2002 © A. Calvert (S. Wiedner collection)

2017: Sold to OKEE Maritime GmbH, Germany. Renamed **OKEE ALBA** (cranes have been removed).



Named **OKEE ALBA** Hong Kong 13/11/2017 © H. Rosenkranz (S. Wiedner collection)

BASIC DATA:

GT: 18334
 DWT: 23493
 TEU: 1740
 Reefer: 300
 LOA: 175.49
 Bmd: 27.40
 Draft: 10.90
 Engine: 1x oil MAN-B&W 7S60MC-C
 Power: 15785 kW
 Speed: 19.5 kn
 Cranes: 2x40 t (2017: removed)

OWNER & FLAG HISTORY:

OKEE ALBA since 01/09/2017
 HANSA NORDBURG since 01/08/2009
 CAP AZUL since 01/05/2004
 P&O NEDLLOYD NELSON since 01/07/2002
 HANSA NORDBURG since 01/12/2001
 GUANGZHOU WENCHONG 289 16-08-2000 LRF
 Flag Date of record Source
 Liberia since 01/05/2002
 Registered owner Date of record Source
 OKEE SHIP THREE GMBH & CO KG since 01/09/2017
 HANSA NORDBURG MBH & CO KG since 15/05/2002
 Ship manager Date of record Source
 OKEE MARITIME GMBH since 01/09/2017
 LEONHARDT & BLUMBERG SHIPMGMT since 10/08/2017
 LEONHARDT & BLUMBERG during 2002

EX-NAMES:

HANSA NORDBURG	2002-02	name when launched
P&O NEDLLOYD NELSON	2002-04	Schiffahrts-Gesellschaft "HANSA NORDBURG" mbH & Co. KG, Liberia
CAP AZUL	2004-09	Schiffahrts-Gesellschaft "HANSA NORDBURG" mbH & Co. KG, Liberia
HANSA NORDBURG	2009-17	Schiffahrts-Gesellschaft "HANSA NORDBURG" mbH & Co. KG, Liberia
OKEE ALBA	2017-	Okee Ship Three GmbH & Co KG, Liberia

GENERAL VESSEL INFORMATION:**2002:**

Delivered as **HANSA NORDBURG** to German investment company Hansa Treuhand AG.

Management by Leonhardt & Blumberg.

Chartered by P&O Nedlloyd when came into service. Renamed **P&O NEDLLOYD NELSON**.

(AK 07+08/2002)

2017:

Weekly Vessel Valuations Report, August 15 2017



The Hansa Nordburg (1,740 TEU, Jun 2002, CSSC OME) sold SS due for USD 3.5 mil vs VV USD 4.0 mil.



VESSEL	DWT	BLT	DETAILS	SS/DD	PRICE	BUYER
HANSA NORDBURG	23.580	2002 GUANGZHOU WENCHO	MAN/B+W 7S70MC-C 1.740 TEU C 2X40	SS 09/17 DD 09/17	USD 3.5 M	UNDISCLOSED

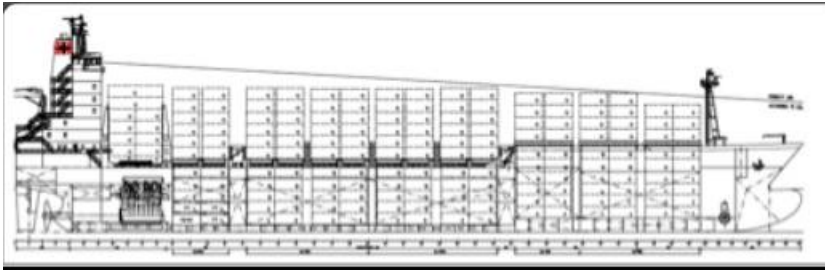
(Hellas S&P Weekly Bulletin - 16 August 2017)



OKEE Maritime is a young shipping company incorporated in Hamburg in 2014.

MV OKEE ALBA

Type:	Container Vessel	Holds/ Hatches:	5/8
Class:	GL	Cranes:	Gearless
Built:	Jun/2002	LOA:	175,49 m
Dwt:	23.722 Dwt	Breadth:	27,40 m
Intake:	1.740 TEU	Draft:	10,90 m



(www.okee-maritime.com)

Last update: 10/03/2018